

(Females)  
) with (  
(Figures)



**Lot 31**  
**20WF03378**

**Timed Auction 19th to 20th**  
**June 2020**

**McCartneys, Worcester**

# **Sale of Ewes, Shearling Ewes & Ewe Lambs**

from

**BRETTLES FLOCK "WF"**

**RAINBOW FLOCK "XPU"**

and, guest consignments from

**DUDSTON FLOCK "YBZ" & BICTON FLOCK "VAA"**

**~ 34 lots ~**

ewes - 4

shearling ewe with ewe lamb at foot - 1

shearling ewes - 21

ewe lambs - 8

*All from Signet recorded and  
MV Accredited flocks*

(Females)

)with(

(Figures)

**19th - 20th June 2020**

**McCartneys**

**Worcester Livestock Market**

**The Heath Meadow, Nunnery Way, Worcester WR4 0SQ**

**Tel: 01905 769770**

# Order of Selling

## “Females with Figures”

### **EWES**

Lots 1 - 4 Rainbow

### **SHEARLING EWES**

Lots 5 Rainbow (shearling ewe with ewe lamb at foot)

Lots 6 - 12 Dudston

Lots 13 - 22 Brettles

Lots 23 - 26 Bicton

### **EWE LAMBS**

Lots 27 - 31 Brettles

Lots 32 - 34 Rainbow

---

---

## INTRODUCTION

**Welcome to the seventh “Females with Figures” sale.** It’s disappointing that it can’t be a live sale at Worcester but that gives us the chance to try out a new Timed On-line Auction. We want to be able to give Charollais members and non members the chance to buy some sound and correct females with good EBVs. So we’ll give it a go!

*The way the auction will work is as follows:-*

- *The Timed Auction will begin at 9.0am on Friday 19th June and end at 5.0 pm on Saturday 20th June. There will be a two minute interval between the closing time for each lot.*
- *Purchasers will need to pre register on line with [mccartneys.auctionmarts.com](http://mccartneys.auctionmarts.com) in advance in order to be able to follow the bidding and bid on line.*
- *Bids will be taken in £s sterling. A 5% buyers premium ( plus VAT) will be added instead of selling in guineas.*
- *Sheep cannot be collected/moved from the vendors until payment has been received and approved by the auctioneers.*
- *Payment to be made by Debit Card, Business Credit Card with a surcharge of 2%, or by Direct Bank Transfer.*

***Refer to the auctioneer's terms and conditions for fuller details.***

**VIEWING** - Photos and videos can never be as good as seeing the sheep for real and you are most welcome to visit any of the vendors by prior arrangement before the sale.

***Last year's sale had sheep to suit everyone's pocket selling for £250 up to £2,000 and again this year we will have a great selection of sheep from Rainbow, Brettles, Dudston and Bicton flocks***

***We have stuck to our sale date*** in June because it gives purchasers enough time to plan their breeding programmes and sponge ewes ready to AI or tup in early July and lamb around the 1st December. ***You can buy some ewes to put to a tup of your choosing and to lamb at a time of year that suits your farm.***

All the sheep for sale are from flocks that record with Signet Sheepbreeder. All have their Estimated Breeding Values (EBV) displayed in the catalogue with their Pedigree information to enable you to make a selection based on all the factors which are important for your flock. Basic information on EBVs and the Benchmark Charollais data is shown overleaf.

Weight records and scanning information are valuable additional tools when selecting breeding stock. They don't replace your own judgement in looking at an animal but they provide measurements that your eyes don't see. The overall EBVs for each trait give comparisons between different sheep based on their own performance and that of their breeding relations regardless of how well they have been fed or prepared for sale.

If you want evidence that buying sheep with good EBVs is worthwhile then have a look at the AHDB ChazCompare report which you can find at <https://signetdata.com/technical/ramcompare/case-studies/>

Our auctioneers are Clive Roads and James Amphlett of McCartneys who will answer any questions you have. Their phone number is 01905 769770.

***Andrew Walton and Mark Rushbrooke***

# Signet Performance Recording New Charollais Benchmark for 2020

**Rebasing** - EBVs and indexes have been rebased and are expressed relative to the average animal in 2010.

**Weight Adjusted Traits** - Please note that all traits marked \* are now weight adjusted. This means that EBVs are a better prediction of carcass composition at a fixed weight. Example A ram with a muscle depth EBV of +2mm is estimated to produce lambs with loin depths 1mm deeper at a fixed weight than a ram with an EBV of 0.

	Bottom 5%	Bottom 10%	Bottom 25%	Avg	Top 25%	Top 10%	Top 5%
Maternal Ability EBV (kg)	-0.64	-0.40	-0.01	0.43	0.87	1.26	1.50
Litter Size Born EBV (%)	-0.08	-0.06	-0.03	0.00	0.03	0.06	0.08
Eight Week Weight EBV (kg)	-0.58	-0.20	0.43	1.13	1.83	2.46	2.84
Scan Weight EBV (kg)	-1.55	-0.56	1.11	2.97	4.83	6.50	7.49
Muscle Depth EBV (mm)	-0.78	-0.43	0.15	0.80	1.45	2.03	2.38
Fat Depth EBV (mm)	-0.74	-0.60	-0.35	-0.07	0.21	0.46	0.60
Lean Weight EBV (kg)	-0.22	-0.13	0.04	0.22	0.40	0.57	0.66
Fat Weight EBV (kg)	-0.67	-0.55	-0.36	-0.14	0.08	0.27	0.39
Gigot Muscularity EBV (mm)	-2.70	-2.08	-1.05	0.10	1.25	2.28	2.90
Maternal Index	56	79	119	162	206	245	269
<b>Terminal Sire Index</b>	<b>68</b>	<b>93</b>	<b>135</b>	<b>182</b>	<b>229</b>	<b>271</b>	<b>296</b>

# General Information

The sale is held under the auspices of the British Charollais Sheep Society and all sheep will be sold subject to the Rules and Conditions of the Society. Copies are available from the Society or Auctioneers and will be displayed at the sale. All sheep will be sold in £ sterling (plus a 5% buyers premium (+ VAT)). All sheep to be sold singly (with the exception of Lot 5).

**ALL FEMALES** offered for sale are warranted not to be in lamb. Should the situation arise that a ewe proves to have been in-lamb at the time of the sale, then If within fourteen weeks after the day of sale a female sheep warranted not in lamb as aforesaid proves to be in lamb and within sixteen weeks after the day of sale the purchaser gives to the auctioneers written notice supported by a certificate signed by a veterinary surgeon such female sheep has been proved to have been in lamb then if the sheep lambs naturally at a date which proves it to have been in lamb at the date of sale either the purchaser may return the sheep and her lamb if any to the Vendor or at the sole option of the Purchaser the Vendor shall pay to the Purchaser as and for ascertained and agreed liquidation damages to cover all expenses depreciation in value and other damages whatsoever a sum equal to 25% of the purchase price of the sheep.

The sheep are from **MAEDI VISNA ACCREDITED FLOCKS** registered with the SAC Sheep & Goat Health Scheme.

**PEDIGREE CERTIFICATES** will be sent out by the Charollais office following the sale.. All sheep in the sale are Full Pedigree Registered.

**THE SCRAPIE GENOTYPE** results listed in this catalogue are guaranteed to be correct by the person whose name appears as the Vendor in the catalogue. Whilst the Society will make all possible effort to provide purchasers with the correct information, they can in no way be held responsible for any error or omission of information.

*The breeding information, comments and photographs for sheep in this catalogue have been supplied by the vendors. While every effort has been made, the Society cannot be held responsible for any inaccuracies or omissions.*



# Manor Farm Feeds

Manufacturer and Retailer of High Quality Feeds

High Quality Calf, Cattle, and Sheep Blends and Coarse mixes

Custom made Speciality Blends and Coarse Mixes

Suppliers to many Pedigree Breeders

Horse Feeds and Bedding

Pig Poultry and Pet Feeds

**MANOR FARM FEEDS (Owston) LTD**  
**GREEN LANE, OWSTON, OAKHAM, LEICESTERSHIRE**  
**LE15 8DX**

**TEL 01664 454256 FAX 01664 454561**

**E.MAIL; sales@manorfarmfeeds.co.uk**



Brettles Peaches

# **BRETTLES FLOCK “WF”**

**Margie & Mark Rushbrooke**

**Brettles Farm, Shatterford, Bewdley, Worcs DY12 1TJ**

**Tel: 01299 861200 Mobile: 07748 305857**

**email: mandmrushbrooke@gmail.com**

**Website: [www.brettlesfarm.co.uk](http://www.brettlesfarm.co.uk)**

**W**e have entered 10 shearlings and 5 ewe lambs all with good EBVs.

The shearlings were only shorn in mid April so “what you see is what you get”.

4 are by Rainbow Road to Utopia, 2 by Dalby Rumpole, 1 by Wernfawr Shogun and 3 by Dalby Triple Threat.

The 5 ewe lambs have some great indexes, 4 of them being in the top 5%. 3 are by Triple Threat, 1 by Rumpole and 1 by Brettles Tintin.



Our flock consists of 80 ewes and we have aimed to improve the quality by buying rams that combine correctness with good growth and muscle figures. We have been recording with Signet for over 20 years and believe that in order to improve, you must measure and record but never be a slave to the figures.

Every year we take some of our best ram lambs for CT scanning but this year that has not been possible and we were also upset that our annual ultrasound scanning for muscle and fat depth was not able to take place. As a result this year’s lambs have indexes based on growth figures and their breeding background but Signet assure us that the accuracy of the EBVs will not be significantly affected.

All the ewes and rams in our flock are ARR/ARR genotype and our sale lambs have been genotyped for purchasers peace of mind.

## **Sires of this years consignment**

**Rainbow Road to Utopia** - Has been an outstanding ram for the Brettles flock including siring Brettles Sherman sold for 7,000gns at Worcester in 2017. Very high Growth EBV and excellent Gigot EBV, his lambs have always scanned very well at CT scanning. 8 week weight EBV 3.19 (Top 5%) Growth EBV 8.48 (Top 5%) Muscle Depth EBV -0.73 Gigot EBV 3.42 (Top 5%) T.S.Index 269



**Dalby Rumpole** - A powerful son of Micklehills Odyssey out of a Golden Promise daughter. He throws consistently correct sheep.  
8 week weight EBV 2.03 (Top 25 %) Growth EBV 5.28 (Top 25%) Muscle Depth EBV 2.25 (Top 10%) Gigot EBV -1.62  
T.S.Index 227

**Dalby Triple Threat** - Classy high index ram purchased at the Premier in 2018 (*pictured right*) when his full brother sold to 5,800gns. He is producing some outstanding offspring including 3 shearlings and 3 ewe lambs offered in this sale.  
8 week weight EBV 2.84 (Top 5%) Growth EBV 7.46 ( Top 10%) Muscle Depth EBV 1.63 (Top 25%) Gigot EBV 2.36 ( Top 10%)  
T.S.Index 312



**Brettles Tintin** - We are really pleased with this one from Road to Utopia. (*pictured left*) He was an outstanding lamb and is throwing some great sheep with great figures.  
8 week weight EBV 2.97 (Top 5%) Growth EBV 8.41 ( Top 5%) Muscle Depth EBV 0.01 Gigot EBV 3.26 (Top 5%) T.S.Index 301

**Wernfawr Shogun** - Purchased at the Premier in 2017 he has given us some powerful lambs. His sire is Shamrock Northern Star out of Wernfawr Nijinsky's mother.  
8 week weight EBV 0.49 Growth EBV 4.99 (Top 25%) Muscle Depth EBV 00.76 Gigot EBV -0.28  
T.S.Index 167

### Health Information

MV Accredited

#### Shearling Ewes

Toxovax vaccinated

Heptavac P+ vaccinated

#### Ewe lambs

Heptavac P+ vaccinated



**Brettles Sherman 17WF02245**

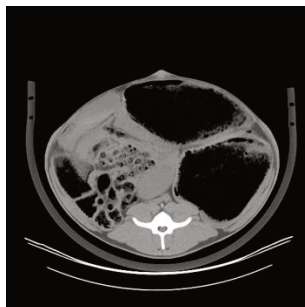
# RAINBOW FLOCK “XPU”

Andrew and Jan Walton

Church Farm, Backford, Chester, CH2 4BE

Tel: 01244 851705 or 07710 522387

Twitter@MeatyAndrew - Facebook: Rainbow Charollais



Despite the unprecedented times the seasons continue to change like past years and undoubtedly will in the future. The sheep don't know there is a global pandemic and pedigree sheep breeding is not just a season long project. The genetics of the females offered here are the results of sire and dam pairings made over the last 15 years!

Last year's new weightings for the EBV's are a vindication of our breeding policy to deliver market requirements for carcass specification and excellent growth rates. We now have returning ram customers who as our genetics has improved have been able to lamb in February rather than January but still hit the early lamb market premium without the additional costs.

Our own "bolt-on" project to RamCompare, "ChazCompare" is now in its second year in conjunction with Jamie & Sue Wild at Redhill Charollais. To date there has been 998 lambs born, sired by 13 different Charollais rams and a benchmark Suffolk.

"You can have it all, but you need to select for it" according to the first year's ChazCompare results, where the analysis of abattoir data has shown producers can simultaneously increase carcass weight, reduce days to slaughter and achieve carcass premiums. By selecting rams carefully this can add £4 per lamb!

All sheep offered for sale today have been on a forage-based diet throughout the winter. These females have the potential to produce stock rams and will add genetic value to your flock. You can't breed rams without ewes so our offering of at this on-line sale should give breeders both old and new the chance to buy genetics that deliver. All the females have good feet, legs and are sound in mouth and udder and the on-line pictures and video will hopefully entice people to bid!

All EBV's are based on the 25th May Signet data run.

### **Health Information**

We are MV accredited and although not tested all sheep are ARR/ARR and should any scrapie monitored flocks purchase we will contribute £10 per animal for a blood test to be collected.

All sheep have been vaccinated during March/April/May with Footvax, Toxovax, Enzovax, and Campyvax as we are strong believers in prevention is better than cure.

All sheep are in the Heptavac P+ system and were wormed with Zolvix during May.

# DUDSTON FLOCK “YBZ”

Chris Crowther

East Dudston Farm, Churbury, Montgomery SY15 6UH

Tel: 01938 561437 or 07792 484032

Email: [chris.tudor.crowther@outlook.com](mailto:chris.tudor.crowther@outlook.com)

Once again we are pleased to join the Females with Figures sale, especially at this very difficult time! We are glad the sale is going ahead!

We have entered 7 good quality yearling ewes, which will be presented without trimming or colouring.

The flock is improving every year and this is showing with our sales. We are getting good feedback and most importantly repeat sales.

All these ewes have a full pedigree and some have already been genotyped and we are waiting results for the others.

## **Sire Information**

**15YBZ00211 - Dudston Percy** - (*pictured below*) A powerful homebred ram with a good skin and consistently producing quality sheep. With commercial ram lambs selling up to £600 and many more at £500 last year.

### **16XXJ00308 - Knockin Rum-Lad** -

Purchased from Abbie Moseley, Knockin flock, he is a big ram with length and gigot.

**16ZVY02621 - Lowerye Rioja** - From Neil Oughton's flock, he has improved muscularity in the flock and he sired the highest gigot muscularity ram lamb in 2018.



# **BICTON FLOCK “VAA”**

**Grant Pink**

**Woodlands Farm, Bicton Lane, Bicton, Shrewsbury SY3 8EU**

**Tel: 01743 850275 or 07792 646245**

**Email: [grantpinky@hotmail.com](mailto:grantpinky@hotmail.com)**

**D**ebut consignment of 4 quality yearlings offered for sale at Females with Figures, includes 3 yearlings which are sired by Edstaston Turnberry, a son of Knockin Shockin. They show great shape and conformation. Also included is an excellent well grown yearling sired by Hollylodge Supreme, who has produced top selling offspring. Her dam (*pictured below*) would have been a part of this year’s show team.



## **Health Information**

MV accredited, Signet recorded. ENZO/TOXO vaccinated and are on the Heptavac P system.

## **Sire Information**

**18TG00725 – Edstaston Turnberry**

(*pictured right*)

I have no doubt that these entries will go on to produce and perform well.





**Premier Sheep and Premier Lamb Drench**  
high levels of trace elements and vitamins to maximise  
health and performance

For more information contact  
Jonathan Guy  
T 01886 880482 M 07866 607466  
E [jganimalhealth@aol.com](mailto:jganimalhealth@aol.com) W [www.jganimalhealth.com](http://www.jganimalhealth.com)

# Ewes

## MR AM & MRS JM WALTON (RAINBOW)

LOT 1 RAINBOW 16XPU02372 (UK0171055/02372) ARR/ARR

TWIN 30/11/2015

**Sire** : Rainbow Lindisfarne (11XPU00684) **SS**: Dalby Inspired (0PE8059)

**Dam** : Knockin (14XXJ00125) **DS**: Dalby Malachite (12PE01501)

Sire Rainbow Lindisfarne needs no introduction! Not the biggest ewe but breeds backend. 3 Lambings - 3 Lambs - 1 female retained in the flock. Top 15% for gigot muscularity

Adj Wgt	Age	Scan Wgt	Mscle Dep	Fat Dep	8 Wk EBV	Scan EBV	Mscle Dpt EBV	Fat Dpt EBV	Gigot EBV	INDEX EBV
18.90	142	42.80	25.23	6.60	0.94	2.44	1.08	1.02	1.91	221.91

LOT 2 RAINBOW 16XPU02444 (UK0171055/02444) ARR/ARR

TWIN 03/12/2015

**Sire** : Castellau One In A Million (14TZ00793) **SS**: Castellau Lord of The Manor (11TZ00252)

**Dam** : Rainbow (12XPU01364) **DS**: Rockvilla Klass Act (1VV0070)

A very sound stock ewe by the 4,000gn Castellau One In A Million. 3 Lambings - 6 Lambs - last year's ram lamb 19XPU03787 who has an index of 281. Top 15% for muscle depth EBV

Adj Wgt	Age	Scan Wgt	Mscle Dep	Fat Dep	8 Wk EBV	Scan EBV	Mscle Dpt EBV	Fat Dpt EBV	Gigot EBV	INDEX EBV
22.40	139	44.80	27.07	3	0.51	0.75	1.76	-0.36	0.7	173.96

LOT 3 RAINBOW 16XPU02488 (UK0171055/02488)

TRIPLET 04/12/2015

**Sire** : Castellau One In A Million (14TZ00793) **SS**: Castellau Lord of The Manor (11TZ00252)

**Dam** : Rainbow (12XPU01297) **DS**: Rainbow Lynyrd Skynyrd (11XPU00700)

A very sound stock ewe by the 4,000gn Castellau One In A Million. 2 Lambings - 3 Lambs - 1 female retained in the flock. Top 25% for muscle depth EBV.

Adj Wgt	Age	Scan Wgt	Mscle Dep	Fat Dep	8 Wk EBV	Scan EBV	Mscle Dpt EBV	Fat Dpt EBV	Gigot EBV	INDEX EBV
23.30	138	45.40	28.95	5.03	2.01	4.41	1.46	0.29	-1.32	204.02

LOT 4 RAINBOW 16XPU02545 (UK0171055/02545)

TWIN 06/12/2015

**Sire** : Rainbow Prince Bishop (15XPU02220) **SS**: Wraycastle Majestic (12DW03904)

**Dam** : Rainbow (1XPU0220) **DS**: Lowerye Evangelist (0ZVY4079)

Sire Rainbow Prince Bishop - high index son of the 2,600gn Wraycastle Majestic. 3 Lambings - 3 Lambs - 1 female retained in the flock, Lot 5 is out of this ewe. Top 2% for Muscle depth EBV!

Adj Wgt	Age	Scan Wgt	Mscle Dep	Fat Dep	8 Wk EBV	Scan EBV	Mscle Dpt EBV	Fat Dpt EBV	Gigot EBV	INDEX EBV
18.90	136	42.60	29.27	4.20	0.02	0.28	2.84	0.24	1.17	232.56

# Shearling ewe with ewe lamb at foot

**MR AM & MRS JM WALTON (RAINBOW)**

**LOT 5 RAINBOW 19XPU03786 (UK0171055/03786)**

SINGLE 02/12/2018

**Sire** : Rainbow Titanium (18XPU03245)

**SS**: Brettles Ricardo (16WF01887)

**Dam** : Rainbow (16XPU02545)

**DS**: Rainbow Prince Bishop (15XPU02220)

Sire Rainbow Titanium, has an overall index of 316. 1 Lambing - 1 Lamb. Top 12% for Terminal Sire Index.

Adj Wgt	Age	Scan Wgt	Mscle Dep	Fat Dep	8 Wk EBV	Scan EBV	Mscle Dpt EBV	Fat Dpt EBV	Gigot EBV	INDEX EBV
23.50	101	35.20	25.20	3.10	1.26	2.93	1.81	0.51	1.58	280.25

**RAINBOW 20XPU04241 (UK0171055/04241)**

SINGLE 09/02/2020

**Sire** : Rainbow Upstart Crow (19XPU03800)

**SS**: Lowerye Tarantino (18ZVY04414)

**Dam** : Rainbow (19XPU03786)

**DS**: Rainbow Titanium (18XPU03245)

Sire Rainbow Upstart Crow by Lowerye Tarantino who is one of this year's ChazCompare rams. Growing at 350g a day from grass and out of a ewe lamb - performance that matters. Top 30% for overall Terminal sire index

Adj Wgt	Age	Scan Wgt	Mscle Dep	Fat Dep	8 Wk EBV	Scan EBV	Mscle Dpt EBV	Fat Dpt EBV	Gigot EBV	INDEX EBV
20.2	98	35.9			0.8	2.04	1.22	0.25	0.84	216.12

# Shearling Ewe

**MR CHRIS CROWTHER (DUDSTON)**

**LOT 6 DUDSTON 19YBZ00381 (UK0309784/00381) ARR/ARR**

TWIN 09/12/2018

**Sire** : Knockin Rum Lad (16XXJ00308)

**SS**: Skelton Whin Oddysey (14NN00778)

**Dam** : Dudston (14YBZ00184)

**DS**: Lowerye Lord (11ZVY00861)

Adj Wgt	Age	Scan Wgt	Mscle Dep	Fat Dep	8 Wk EBV	Scan EBV	Mscle Dpt EBV	Fat Dpt EBV	Gigot EBV	INDEX EBV
27.40	141	54	28.70	9.47	2.04	5.17	-0.72	-0.26	1.74	193.94

**LOT 7 DUDSTON 19YBZ00403 (UK0309784/00403)**

TWIN 10/12/2018

**Sire** : Dudston Percy (15YBZ00211)

**SS**: Edstaston Normandy (13TG00253)

**Dam** : Dudston (15YBZ00239)

**DS**: Dudston Monty (12YBZ00095)

Adj Wgt	Age	Scan Wgt	Mscle Dep	Fat Dep	8 Wk EBV	Scan EBV	Mscle Dpt EBV	Fat Dpt EBV	Gigot EBV	INDEX EBV
22.40	140	46	30.20	4.77	-0.48	-1.37	0.5	-0.04	0.93	109.76



**LOT 8 DUDSTON 19YBZ00374 (UK0309784/00374)**

TRIPLET 07/12/2018

**Sire** : Knockin Rum Lad (16XXJ00308)**SS** : Skelton Whin Oddysey (14NN00778)**Dam** : Dudston (13YBZ00124)**DS** : Lowerye Lord (11ZVY00861)

Adj Wgt	Age	Scan Wgt	Mscle Dep	Fat Dep	8 Wk EBV	Scan EBV	Mscle Dpt EBV	Fat Dpt EBV	Gigot EBV	INDEX EBV
25.20	143	46.50	30.90	5.73	0.09	0.52	1.03	-0.33	1.53	149.22

**LOT 9 DUDSTON 19YBZ00389 (UK0309784/00389)**

TWIN 09/12/2018

**Sire** : Dudston Percy (15YBZ00211)**SS** : Edstaston Normandy (13TG00253)**Dam** : Dudston (14YBZ00174)**DS** : Lowerye Lord (11ZVY00861)

Adj Wgt	Age	Scan Wgt	Mscle Dep	Fat Dep	8 Wk EBV	Scan EBV	Mscle Dpt EBV	Fat Dpt EBV	Gigot EBV	INDEX EBV
22.50	141	46	31.90	6.63	0.29	0.71	0.98	0.18	2.59	174.21

**LOT 10 DUDSTON 19YBZ00378 (UK0309784/00378)**

TWIN 08/12/2018

**Sire** : Dudston Percy (15YBZ00211)**SS** : Edstaston Normandy (13TG00253)**Dam** : Dudston (15YBZ00216)**DS** : Dudston Monty (12YBZ00095)

Adj Wgt	Age	Scan Wgt	Mscle Dep	Fat Dep	8 Wk EBV	Scan EBV	Mscle Dpt EBV	Fat Dpt EBV	Gigot EBV	INDEX EBV
24.70	142	49.50	31.20	5.77	0.65	1.96	0.28	-0.39	0.93	146.67

**LOT 11 DUDSTON 19YBZ00388 (UK0309784/00388) ARR/ARR**

TWIN 10/12/2018

**Sire** : Dudston Percy (15YBZ00211)**SS** : Edstaston Normandy (13TG00253)**Dam** : Dudston (16YBZ00272)**DS** : Lowerye Prancer (15ZVY01663)

Adj Wgt	Age	Scan Wgt	Mscle Dep	Fat Dep	8 Wk EBV	Scan EBV	Mscle Dpt EBV	Fat Dpt EBV	Gigot EBV	INDEX EBV
28.50	140	55	31.20	10.53	1.81	4.74	0.69	0.39	0.85	220.83

**LOT 12 DUDSTON 19YBZ00373 (UK0309784/00373)**

TRIPLET 07/12/2018

**Sire** : Lowerye Rioja (16ZVY02621)**SS** : Wedderburn Peleus (15WNY02086)**Dam** : Dudston (15YBZ00227)**DS** : Edstaston Normandy (13TG00253)

Adj Wgt	Age	Scan Wgt	Mscle Dep	Fat Dep	8 Wk EBV	Scan EBV	Mscle Dpt EBV	Fat Dpt EBV	Gigot EBV	INDEX EBV
22	143	46	29.80	5.80	0.86	2.24	0.42	0.03	1.76	173.10

**MR & MRS M RUSHBROOKE (BRETTLES)****LOT 13 BRETTLES 19WF02909 (UK0302256/02909)**

TWIN 01/12/2018

**Sire** : Rainbow Road to Utopia (16XPU02468)**SS** : Wedderburn Peleus (15WNY02086)**Dam** : Brettles (15WF01489)**DS** : Loanhead Odds On (14WNC10006)

2nd prize ewe lamb at Burwarton Show 2019. Road to Utopia daughter out of a Loanhead Odds On ewe. Deep bodied ewe with potential.

Adj Wgt	Age	Scan Wgt	Mscle Dep	Fat Dep	8 Wk EBV	Scan EBV	Mscle Dpt EBV	Fat Dpt EBV	Gigot EBV	INDEX EBV
25.30	116	45	28.42	3.73	1.86	4.73	-0.03	-0.04	2.37	216.41

**LOT 14 BRETTLER 19WF02998 (UK0302256/02998)**

TWIN 05/12/2018

**Sire** : Rainbow Road to Utopia (16XPU02468) **SS**: Wedderburn Peleus (15WNY02086)**Dam** : Brettles (14WF01219) **DS**: Dalby Inspired (0PE8059)

Top 5% ewe by Road to Utopia. Top 5% for Growth and Gigot muscularity. Dam, a Dalby Inspired daughter, is one of our top index ewes and mother of Brettles Tintin who has sired some first class lambs for us this year. Outstanding chance to buy our best breeding.

Adj Wgt	Age	Scan Wgt	Mscle Dep	Fat Dep	8 Wk EBV	Scan EBV	Mscle Dpt EBV	Fat Dpt EBV	Gigot EBV	INDEX EBV
25.80	112	46.50	33.24	3.47	2.75	7.89	1.18	-0.41	2.93	313.56

**LOT 15 BRETTLER 19WF02991 (UK0302256/02991)**

TWIN 05/12/2018

**Sire** : Rainbow Road to Utopia (16XPU02468) **SS**: Wedderburn Peleus (15WNY02086)**Dam** : Brettles (17WF02255) **DS**: Inverae Oisian (14XNL00343)

Another Road to Utopia daughter. Top 25% Growth EBV and top 10% Gigot muscularity. Well balanced ewe whose dam goes back to Dalby Inspired.

Adj Wgt	Age	Scan Wgt	Mscle Dep	Fat Dep	8 Wk EBV	Scan EBV	Mscle Dpt EBV	Fat Dpt EBV	Gigot EBV	INDEX EBV
19	112	39	27.69	3.27	1.77	5.06	-0.51	-0.11	2.37	202.56

**LOT 16 BRETTLER 19WF02911 (UK0302256/02911)**

TRIPLER 01/12/2018

**Sire** : Rainbow Road to Utopia (16XPU02468) **SS**: Wedderburn Peleus (15WNY02086)**Dam** : Brettles (15WF01445) **DS**: Loanhead Odds On (14WNC10006)

This Road to Utopia daughter also goes back to Dalby Inspired on her dam's side. She is in the top 25% for 8 week weight and for eye muscle depth and top 10% for Gigot muscularity.

Adj Wgt	Age	Scan Wgt	Mscle Dep	Fat Dep	8 Wk EBV	Scan EBV	Mscle Dpt EBV	Fat Dpt EBV	Gigot EBV	INDEX EBV
21.90	116	39	29.38	3.50	1.83	4.53	1.48	0.21	2.52	249.57

**LOT 17 BRETTLER 19WF03010 (UK0302256/03010)**

TWIN 06/12/2018

**Sire** : Wernfawr Shogun (17XEV01219) **SS**: Shamrock Northern Star (13XRL00159)**Dam** : Brettles (16WF01947) **DS**: Brettles Peter Rabbit (15WF01438)

Sharp, well balanced ewe out of an Elmwick Mr.McGregor grand-daughter. Sire is Wernfawr Shogun who was by Northern Star out of Nijinsky's mother.

Adj Wgt	Age	Scan Wgt	Mscle Dep	Fat Dep	8 Wk EBV	Scan EBV	Mscle Dpt EBV	Fat Dpt EBV	Gigot EBV	INDEX EBV
23.40	111	40	27.27	2.77	1.04	2.57	1.06	-0.48	0.17	189.36

**LOT 18 BRETTLER 19WF03003 (UK0302256/03003)**

TWIN 03/12/2018

**Sire** : Dalby Triple Threat (18PE06851) **SS**: Dalby Ranieri (16PE04907)**Dam** : Wedderburn (17WNY02802) **DS**: Parkgate Outlaw (14ZCA01016)

Top 25% ewe with a top 10% growth rating. Sire is Dalby Triple Threat who is producing some great sheep for us. Dam was purchased at the Wedderburn dispersal sale.

Adj Wgt	Age	Scan Wgt	Mscle Dep	Fat Dep	8 Wk EBV	Scan EBV	Mscle Dpt EBV	Fat Dpt EBV	Gigot EBV	INDEX EBV
26.60	114	46	30.10	3.50	2.51	6.62	0.99	-0.23	1.42	259.26

**LOT 19 BRETTLER 19WF02963 (UK0302256/02963)**

TWIN 03/12/2018

**Sire :** Dalby Triple Threat (18PE06851) **SS:** Dalby Ranieri (16PE04907)**Dam :** Brettles (16WF01864) **DS:** Brettles Patriot (15WF01487)

Smart eye catching ewe by Dalby Triple Threat out of a Brettles Patriot daughter.

Adj Wgt	Age	Scan Wgt	Mscle Dep	Fat Dep	8 Wk EBV	Scan EBV	Mscle Dpt EBV	Fat Dpt EBV	Gigot EBV	INDEX EBV
22.40	114	38	28.11	3.17	1.85	4.21	1.12	-0.06	1.29	222.25

**LOT 20 BRETTLER 19WF02952 (UK0302256/02952)**

TWIN 03/12/2018

**Sire :** Brettles Patriot (15WF01487) **SS:** Loanhead Odds On (14WNC10006)**Dam :** Brettles (12WF00603) **DS:** Brettles Lovejoy (11WF00258)

Adj Wgt	Age	Scan Wgt	Mscle Dep	Fat Dep	8 Wk EBV	Scan EBV	Mscle Dpt EBV	Fat Dpt EBV	Gigot EBV	INDEX EBV
25.80	114	39	26.12	2.77	1.41	3.16	-0.56	-0.02	0.44	153.70

**LOT 21 BRETTLER 19WF02903 (UK0302256/02903)**

TRIPLER 30/11/2018

**Sire :** Dalby Rumpole (16PE04909) **SS:** Micklehills Odyssey (14ZWA03356)**Dam :** Brettles (17WF02222) **DS:** Foulrice Pacemaker (15DG05116)

Top 25% Growth EBV by Dalby Rumpole out of a Foulrice Pacemaker daughter.

Adj Wgt	Age	Scan Wgt	Mscle Dep	Fat Dep	8 Wk EBV	Scan EBV	Mscle Dpt EBV	Fat Dpt EBV	Gigot EBV	INDEX EBV
22	117	41	28.11	4.33	2.05	5.49	1.06	0.37	-0.57	219.48

**LOT 22 BRETTLER 19WF02987 (UK0302256/19WF02987)**

TRIPLER 04/12/2018

**Sire :** Dalby Rumpole (16PE04909) **SS:** Micklehills Odyssey (14ZWA03356)**Dam :** Brettles (14WF01163) **DS:** Foulrice Justin (0DG9107)

Top 25% for Growth EBV and top 10% for Muscle depth EBV. By Dalby Rumpole out of a Foulrice Justin daughter.

Adj Wgt	Age	Scan Wgt	Mscle Dep	Fat Dep	8 Wk EBV	Scan EBV	Mscle Dpt EBV	Fat Dpt EBV	Gigot EBV	INDEX EBV
24.80	113	41	29.79	4.60	2.47	6.15	2.32	0.63	-0.83	255.57

**MR GRANT PINK (BICTON)****LOT 23 BICTON 19VAA00509 (UK0303184/00509)**

TWIN 03/12/2018

**Sire :** Edstaston Turnberry (18TG00725) **SS:** Knockin Shockin' (17XXJ00376)**Dam :** Bicton (17VAA00323) **DS:** Edstaston (14TG00328)

Adj Wgt	Age	Scan Wgt	Mscle Dep	Fat Dep	8 Wk EBV	Scan EBV	Mscle Dpt EBV	Fat Dpt EBV	Gigot EBV	INDEX EBV
28	116	41	29.05	4.77	0.66	1.29	0.6	0.77	1.22	148.82

**LOT 24 BICTON 19VAA00532 (UK0303184/00532)**

TRIPLET 04/12/2018

**Sire** : Edstaston Turnberry (18TG00725) **SS**: Knockin Shockin' (17XXJ00376)**Dam** : Bicton (17VAA00320) **DS**: Edstaston (14TG00328)

Adj Wgt	Age	Scan Wgt	Mscle Dep	Fat Dep	8 Wk EBV	Scan EBV	Msc Dpt EBV	Fat Dpt EBV	Gigot EBV	INDEX EBV
26.40	115	37.60	28.95	3.30	-0.04	-0.04	1.31	0.48	1.3	141.01

**LOT 25 BICTON 19VAA00524 (UK0303184/00524)**

TRIPLET 03/12/2018

**Sire** : Hollylodge Supreme (17XWZ00370) **SS**: Rhaeadr Prospect (15XXK01129)**Dam** : Logie Durno (17ZNN18407) **DS**: Rhaeadr Orlando (14XXK01077)

Adj Wgt	Age	Scan Wgt	Mscle Dep	Fat Dep	8 Wk EBV	Scan EBV	Msc Dpt EBV	Fat Dpt EBV	Gigot EBV	INDEX EBV
30	116	50	30.73	5.80	2.74	7.36	-0.31	-0.04	-0.95	222.08

**LOT 26 BICTON 19VAA00539 (UK0303184/00539)**

TWIN 05/12/2018

**Sire** : Edstaston Turnberry (18TG00725) **SS**: Knockin Shockin' (17XXJ00376)**Dam** : Edstaston (15TG00422) **DS**: Arbryn Olazabal (14WRF00262)

Adj Wgt	Age	Scan Wgt	Mscle Dep	Fat Dep	8 Wk EBV	Scan EBV	Msc Dpt EBV	Fat Dpt EBV	Gigot EBV	INDEX EBV
35	114	49	33.24	5.37	1.37	3.43	2.09	0.14	0.89	229.20

## Ewe Lamb

**MR & MRS M RUSHBROOKE (BRETTLES)****LOT 27 BRETTLES 20WF03435 (UK0302256/03435)**

SINGLE 06/12/2019

**Sire** : Brettles Tintin (18WF02810) **SS**: Rainbow Road to Utopia (16XPU02468)**Dam** : Brettles (14WF01147) **DS**: Logie Durno Jack of Diamonds (0ZNN9019)

This is a lovely high index ewe lamb. The first for sale by Brettles Tintin. She is Top 5% for Growth EBV and top 5% for overall index.

Adj Wgt	Age	Scan Wgt	Mscle Dep	Fat Dep	8 Wk EBV	Scan EBV	Msc Dpt EBV	Fat Dpt EBV	Gigot EBV	INDEX EBV
28.5	111	46.5			2.79	7.81	0.76	0.05	1.37	299.51

**LOT 28 BRETTLES 20WF03352 (UK0302256/03352)**

TRIPLET 02/12/2019

**Sire** : Dalby Triple Threat (18PE06851) **SS**: Dalby Ranieri (16PE04907)**Dam** : Brettles (17WF02246) **DS**: Rainbow Road to Utopia (16XPU02468)

A top index lamb by Dalby Triple Threat out of the full litter sister to Brettles Sherman. Sherman's daughters had a fantastic sale for Werfawr and Arbryn at the High Flyers sale last October. Her index of 315 is top 5% and her Growth EBV of 9.52 is one of the highest in the breed. This is breeding we should not be selling!

Adj Wgt	Age	Scan Wgt	Mscle Dep	Fat Dep	8 Wk EBV	Scan EBV	Msc Dpt EBV	Fat Dpt EBV	Gigot EBV	INDEX EBV
24.6	115	45			3.58	9.53	0.79	-0.12	1.98	315.73

**LOT 29 BRETTLER 20WF03414 (UK0302256/03414)**

TWIN 05/12/2019

**Sire** : Dalby Triple Threat (18PE06851) **SS**: Dalby Ranieri (16PE04907)  
**Dam** : Brettles (16WF01907) **DS**: Foulrice Pacemaker (15DG05116)

Another top index ewe lamb by Dalby Triple Threat out of a high index Foulrice Pacemaker daughter. Her index of 320 is top 5% with top 5% growth EBV and top 25% muscle depth EBV. Will make a great addition to anyone's flock.

Adj Wgt	Age	Scan Wgt	Mscle Dep	Fat Dep	8 Wk EBV	Scan EBV	Msc Dpt EBV	Fat Dpt EBV	Gigot EBV	INDEX EBV
27.1	112	46.5			3.39	8.53	1.69	-0.15	1.22	320.59

**LOT 30 BRETTLER 20WF03423 (UK0302256/03423)**

TWIN 05/12/2019

**Sire** : Dalby Triple Threat (18PE06851) **SS**: Dalby Ranieri (16PE04907)  
**Dam** : Brettles (17WF02240) **DS**: Inverae Oisian (14XNL00343)

The third of our top index Triple Threat lambs this time out of an Inverawe Oisian daughter. With a top 5% Index of 305 and a top 5% Growth EBV too she has got potential.

Adj Wgt	Age	Scan Wgt	Mscle Dep	Fat Dep	8 Wk EBV	Scan EBV	Msc Dpt EBV	Fat Dpt EBV	Gigot EBV	INDEX EBV
25.2	112	45			2.72	7.52	1.29	-0.25	1.86	305.78

**LOT 31 BRETTLER 20WF03378 (UK0302256/03378)**

TWIN 04/12/2019

**Sire** : Dalby Rumpole (16PE04909) **SS**: Micklehills Odyssey (14ZWA03356)  
**Dam** : Brettles (18WF02700) **DS**: Rainbow Road to Utopia (16XPU02468)

Very well balanced ewe lamb with top 25 % Growth EBV and top 25% muscle depth EBV. By Dalby Rumpole out of a Road to Utopia daughter.

Adj Wgt	Age	Scan Wgt	Mscle Dep	Fat Dep	8 Wk EBV	Scan EBV	Msc Dpt EBV	Fat Dpt EBV	Gigot EBV	INDEX EBV
27.7	113	45			2.27	5.81	1.89	0.06	0.2	246.42

**MR AM & MRS JM WALTON (RAINBOW)****LOT 32 RAINBOW 20XPU04023 (UK0171055/04023)**

TWIN-ET 02/12/2019

**Sire** : Rainbow Passion & Pride (15XPU02182) **SS**: Rainbow Owlett (14XPU01850)  
**Dam** : Castellau (13TZ00692) **DS**: Loanhead Liberator (11WNC03170)

Part of our ET programme by Passion and Pride out of a Castellau ewe who was a tremendous milker. Top 25 % Overall terminal sire Index.

Adj Wgt	Age	Scan Wgt	Mscle Dep	Fat Dep	8 Wk EBV	Scan EBV	Msc Dpt EBV	Fat Dpt EBV	Gigot EBV	INDEX EBV
20.6	96	33.2	21.13	1.03	1.88	5.23	0.66	-0.53	1.33	229.36

**LOT 33 RAINBOW 20XPU04028 (UK0171055/04028)**

TWIN 03/12/2019

**Sire** : Lowerye Tarantino (18ZVY04414) **SS**: Lowerye Ronnie (16ZVY02674)  
**Dam** : Rainbow (18XPU03238) **DS**: Rainbow Script for a Jester's Tear

Sire Lowerye Tarantino a heavily used ram who has left some very muscly sheep! Top 20% Overall terminal sire Index

Adj Wgt	Age	Scan Wgt	Mscle Dep	Fat Dep	8 Wk EBV	Scan EBV	Msc Dpt EBV	Fat Dpt EBV	Gigot EBV	INDEX EBV
16.8	95	28	23.64	1	1.29	3.95	1.55	-0.5	1.15	244.61

**LOT 34 RAINBOW 20XPU04052 (UK0171055/04052)**

TWIN 03/12/2019

**Sire :** Lowerye Tarantino (18ZVY04414) **SS:** Lowerye Ronnie (16ZVY02674)

**Dam :** Rainbow (17XPU02985) **DS:** Rainbow Renegade (16XPU02374)

Sire Lowerye Tarantino a heavily used ram who has left some very muscly sheep! Top 10% for scan weight EBV

Adj Wgt	Age	Scan Wgt	Mscle Dep	Fat Dep	8 Wk EBV	Scan EBV	Msc Dpt EBV	Fat Dpt EBV	Gigot EBV	INDEX EBV
19.3	95	35.2	20.49	1.2	2.16	6.6	-0.18	-0.66	0.23	220.06