

Using a Performance Recorded Ram will Improve Your Flock



Trials show recorded rams can be worth an extra £800 over their working lifetime.

Progeny by recorded rams were heavier, reached slaughter weight more quickly and had superior carcase conformation.

Invest wisely and find the ram with the most profitable breeding potential for your flock.



A new manual has been produced which explains the financial and production benefits of using recorded rams.

For a copy of the manual please ring:
0870 241 8829

Understanding Sale Cards

	Estimated Breeding Values	Accuracy Values
SCAN WEIGHT EBV	10.54 kg	75
MUSCLE DEPTH EBV	3.77 mm	70
FAT DEPTH EBV	-0.22 mm	72
INDEX	396	72

For more details on the Better Returns Programme, call 0870 241 8829, email brp@eblex.org.uk or visit www.eblex.org.uk

When interpreting sale cards remember:

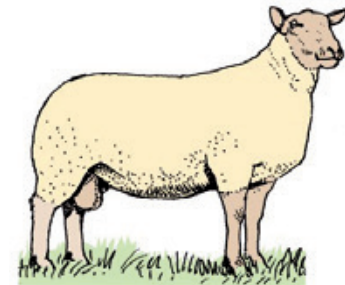
- High values for weight, maternal ability & muscle depth EBVs improve flock performance
- Select rams with the optimum fat depth EBV for your enterprise
- Positive litter size EBV will increase prolificacy
- High accuracy values indicate the degree of confidence that can be made in EBV predictions

For more information contact:

Signet
Tel: 0247 647 8829
Email: signet@eblex.ahdb.org.uk

EBLEX BRP
Tel: 0870 241 8829
Email: brp@eblex.ahdb.org.uk

A Buyer's Guide to Estimated Breeding Values (EBVs)



Charollais

2014

Investing in high EBV rams could be worth an extra £800 over their working lifetime.





Charollais Breed Benchmark

The Breed Benchmark enables you to identify where a ram ranks within the breed.

EBV	Average	Top 25%	Top 10%
Eight Week Weight (kg)	3.25	3.93	4.54
Mature Size	1.06	1.83	2.52
Litter Size	0.09	0.16	0.22
Maternal Ability (kg)	0.09	0.30	0.49
Scan Weight (kg)	7.14	8.52	9.77
Muscle Depth (mm)	2.50	3.17	3.77
Fat Depth (mm)	0.00	-0.29	Leaner
		0.29	Fatter
Terminal Sire Index	283	324	361

Eight Week Weight - Breeding potential for growth to 8 weeks of age
Mature Size - Breeding potential for mature size
Litter Size - Breeding potential to produce prolific female progeny
Maternal Ability - The ewe's maternal ability - milk production and maternal care - expressed by lambs' performance to 8 weeks
Scan Weight - Breeding potential for growth to 21 weeks (age at scanning). Rams with high EBVs produce faster growing lambs that can be taken to heavier weights
Muscle Depth - An assessment of muscling across the loin, which can be used to assess the yield of lean meat in the carcase
Fat Depth - Negative values indicate animals that will produce leaner carcasses, which can be taken to higher weights without becoming over-fat. Positive values would indicate fatter progeny.
Index - Highlights superior terminal sires for both the pedigree and commercial producer

Interpreting Breed Sales Charts

EBV and Accuracy values are displayed on the right of the graph

High Litter size EBV = more prolific ewes

High Maternal Ability EBV = ewes with more milk

High 8 week weight EBV = high early growth rate

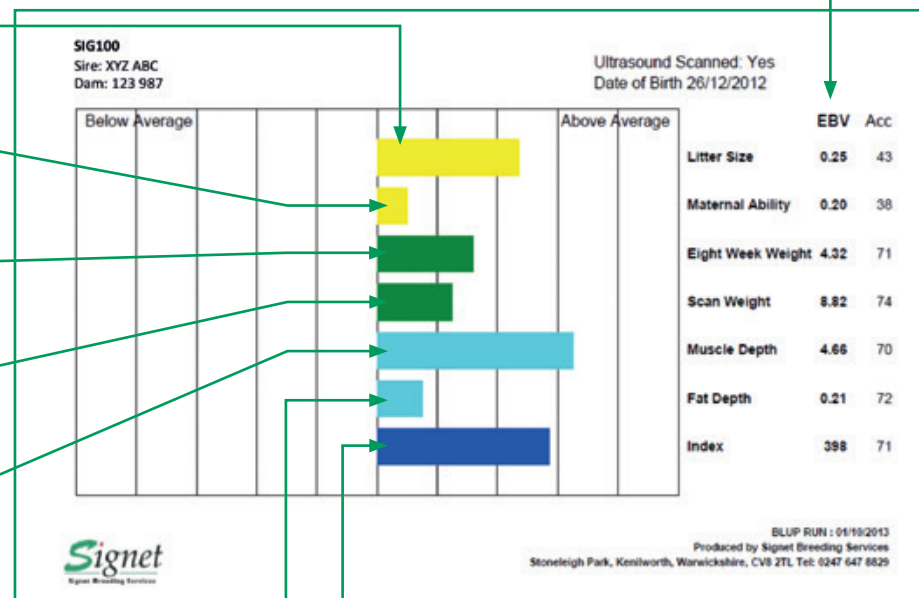
High scan weight EBV = high growth rate

High muscle depth EBV = better conformation

Negative fat depth EBV = leaner lambs
Positive fat depth EBV = fatter lambs

N.B. from 2014 onwards positive fat depths will be displayed of the right-hand sides of Sale Charts

The Index gives an indication of the overall ranking according to the breed objectives



Finding Charts:

These Sale Charts are available for all animals on the BASCO database and can be accessed via the "EBV Search" section of the Signet website (www.signetfbc.co.uk).

Accuracy Values:

Accuracy Values indicate how much we know about an animal and its relatives for a specific trait. They indicate the likelihood of an EBV changing (up or down) as more information on the animal becomes available.